

PUBLIC SURVEY SUMMARY

A community survey was launched in late Spring 2025 and remained open for two months. The goal of this survey was to gather input from a large portion of the community to guide the conservation plan. The following is a summary of some of the findings.

BY THE NUMBERS

189 respondents

85% own a home in Jackson County

73% own land in Jackson County

68% are Jackson County residents

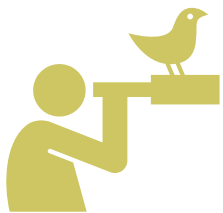
5 TOP WAYS TO EXPERIENCE THE DISTRICT'S NATURAL RESOURCES

DAY HIKING



VISITING SCENIC OVERLOOKS

DRIVING COUNTRY ROADS



NATURE VIEWING

SCENIC DRIVING

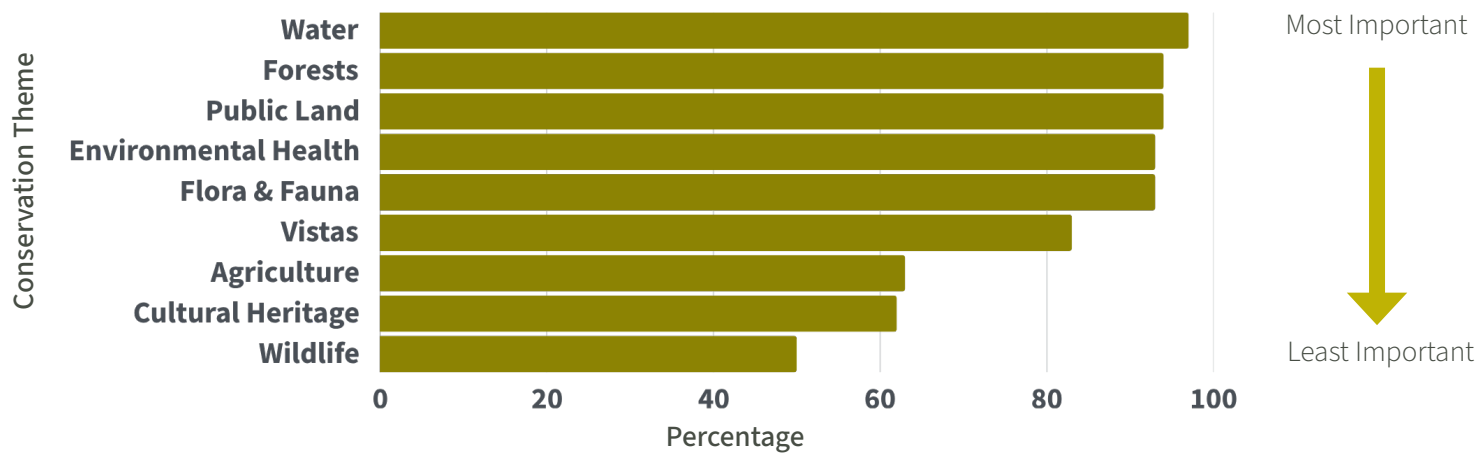


10 MOST VISITED RECREATION LOCATIONS IN THE DISTRICT

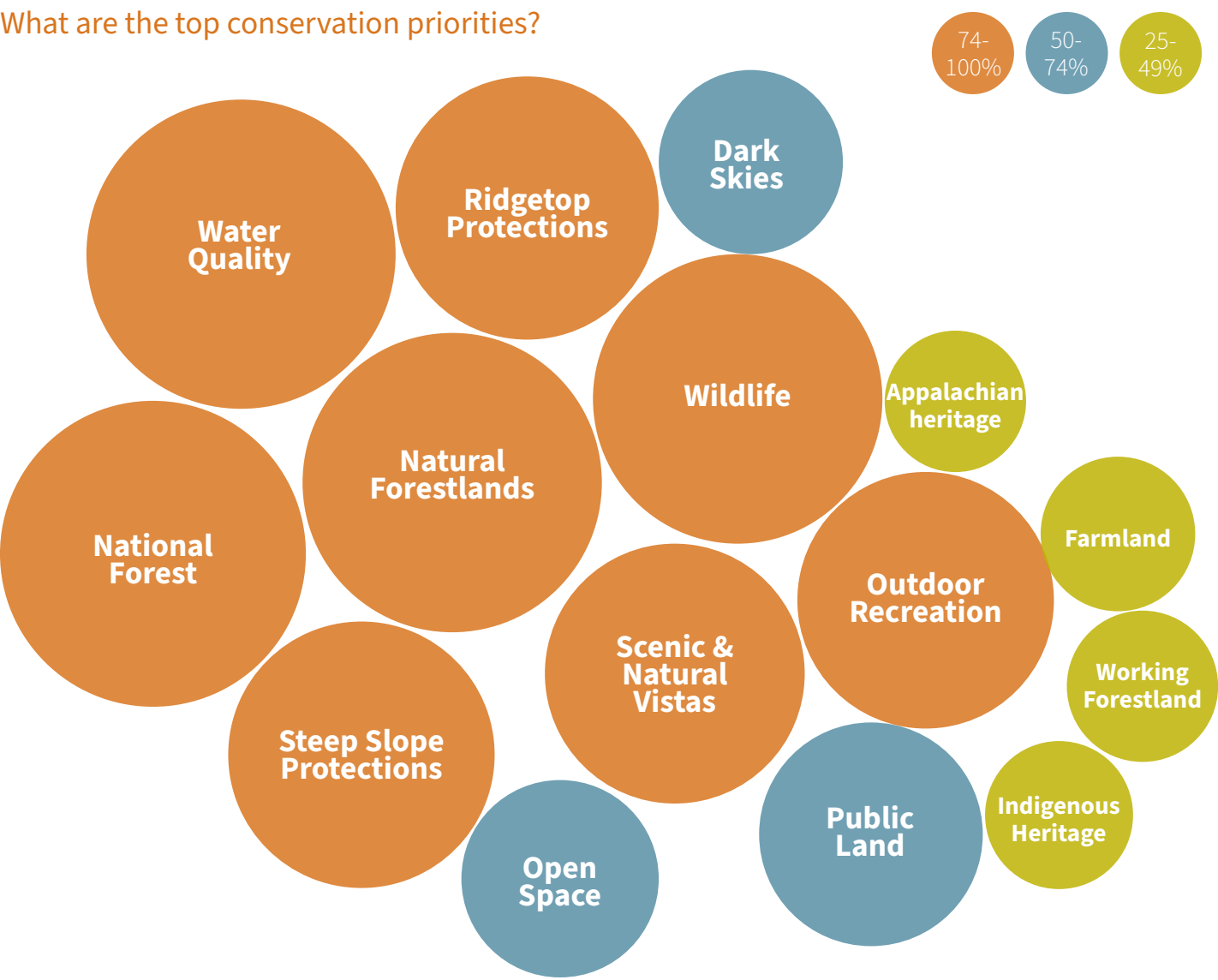
- 1 BLUE RIDGE PARKWAY
- 2 LAKE GLENVILLE
- 3 NANTAHALA NATIONAL FOREST
- 4 WHITESIDE MOUNTAIN
- 5 WHITEWATER FALLS
- 6 PANTHER TOWN VALLEY
- 7 CASHIERS SLIDING ROCK
- 8 APPALACHIAN TRAIL
- 9 SILVERRUN FALLS
- 10 CASHIERS-GLENVILLE RECREATION CENTER

PUBLIC SURVEY SUMMARY

What are the most important conservation themes? (Note that these specific themes were defined at the beginning of the planning effort with the input of the steering committee)

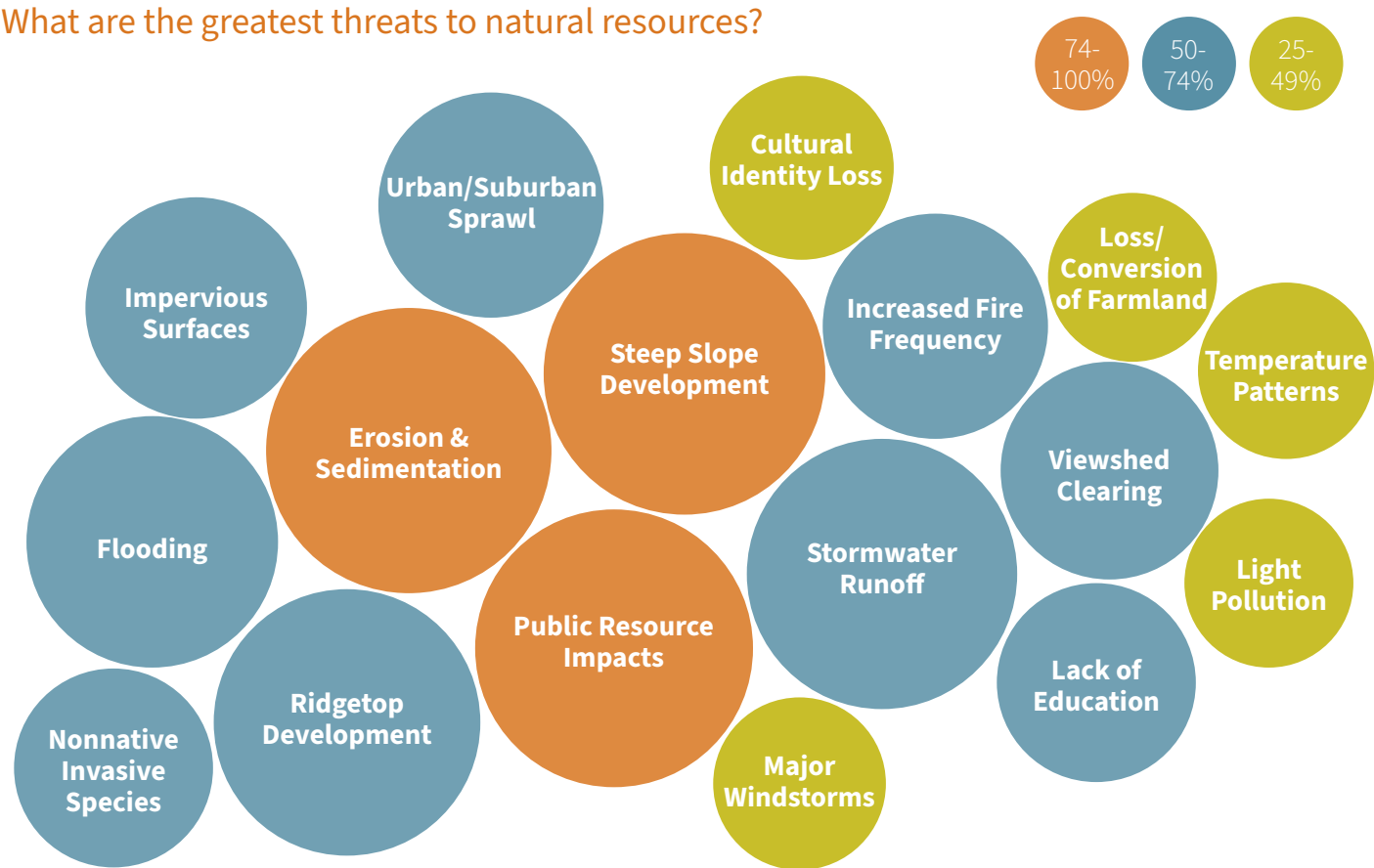


What are the top conservation priorities?

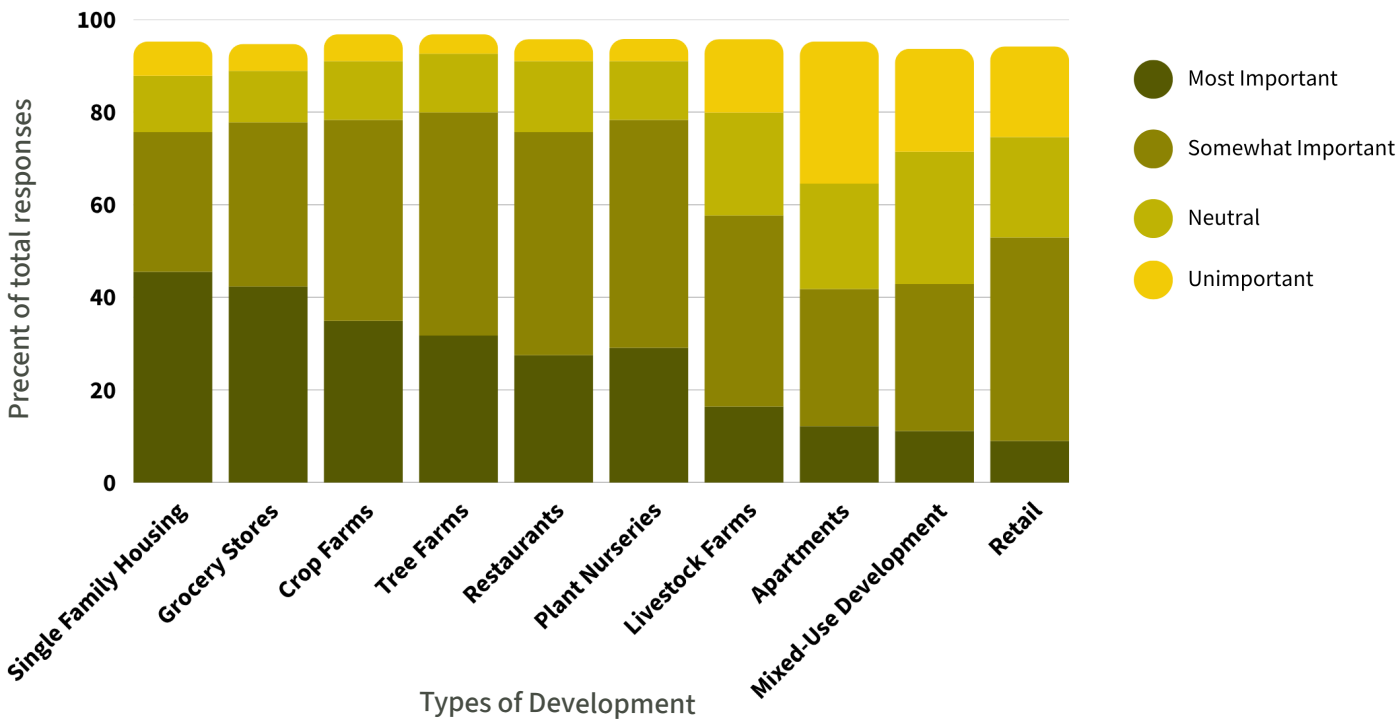


PUBLIC SURVEY SUMMARY

What are the greatest threats to natural resources?



What types of development are most important to enhance quality of life in the District?



PUBLIC SURVEY SUMMARY

Select which statement best reflects your opinion on the relationship between natural resources and development:

Sometimes natural resource protection and economic development are in conflict, and we must choose one over the other.

We can protect natural resources and sustain economic development at the same time, without having to choose one over the other.

50.79%

49.21%

Which areas are most suitable for development?

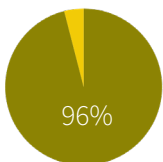
- Open Spaces (40%)
- Roadsides (32%)
- Utility corridors (32%)

Which areas are most suitable for conservation?

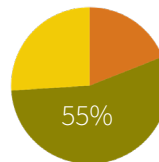
- Headwater streams (90%)
- Natural forestland (90%)
- Cultural Sites (83%)
- Wetlands (83%)
- Ridgetops (82%)
- Parks (80%)
- Floodplains (78%)
- Steep slopes (75%)
- Rock outcrops (73%)
- Farmlands (72%)
- Riparian Areas (69%)
- Open spaces (64%)
- Working forestlands (62%)
- Pasture/hayfields (56%)
- Tree plantations (50%)

Survey respondent preferences:

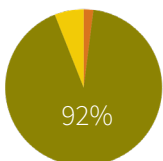
YES NO UNSURE



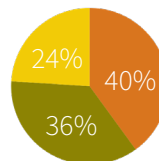
Do you support programs that are designed to protect land, water, and habitats?



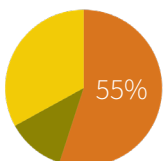
Would you support incentives for development that would fast-track permitting in exchange for increased protections of natural resources?



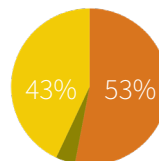
Would you support changes to County codes and ordinances that strengthen protections for natural resources?



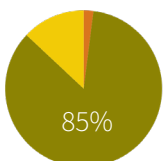
Do you know about the County's current policies and ordinances that pertain to natural resources and development?



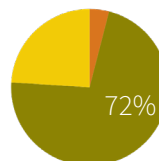
Would you support changes to County codes and ordinances that promote development?



Do you feel that the County's current policies and ordinances that pertain to natural resources and development are adequate?



Do you think future development in the District should be guided towards or away from certain areas?



Would you support initiatives to expand protections for farmland in the District?