



- TYPICAL NOTES:
- STONE VENEER
 - METAL COPING
 - HARDIE BOARD & BATTEN
 - ACCENT LIGHTING
 - ANODIZED ALUMINUM STOREFRONT
 - PVC PERGOLA

1 NORTHWEST ELEVATION
 A1.1 SCALE: 1/4" = 1'-0"

- TYPICAL NOTES:
- STONE VENEER
 - METAL COPING
 - HARDIE BOARD & BATTEN
 - ACCENT LIGHTING
 - METAL CANOPY
 - ANODIZED ALUMINUM STOREFRONT



2 NORTHEAST ELEVATION
 A1.1 SCALE: 1/4" = 1'-0"

REVISIONS

#	DATE

A NEW RESTAURANT & BAR FOR:



CULLOWHEE, NC

DAVID RIDDLE, ARCHITECT



1481 HODGES MILL ROAD
 WATKINSVILLE, GA
 30677
 (404) 285-8646

TITLE: ELEVATIONS

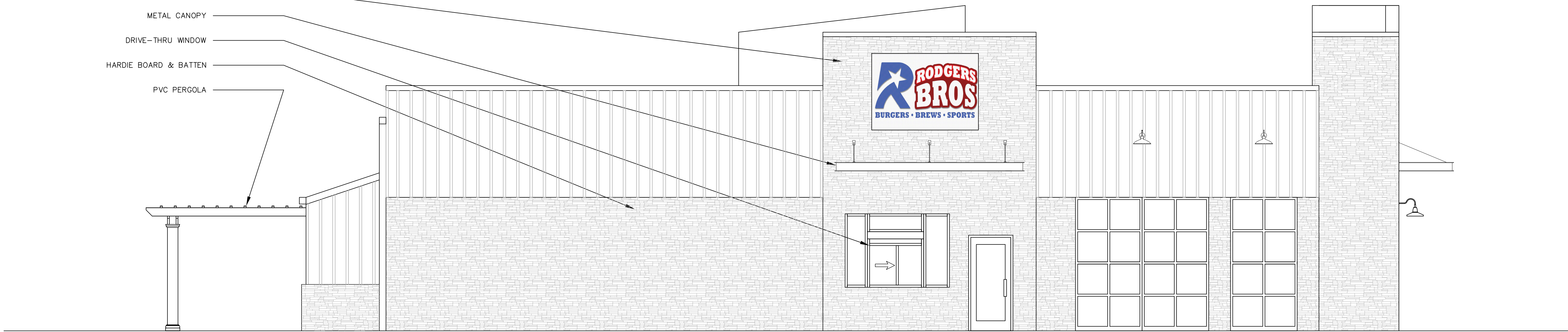
JOB #: 2121

DATE: 02.28.22

SHEET #

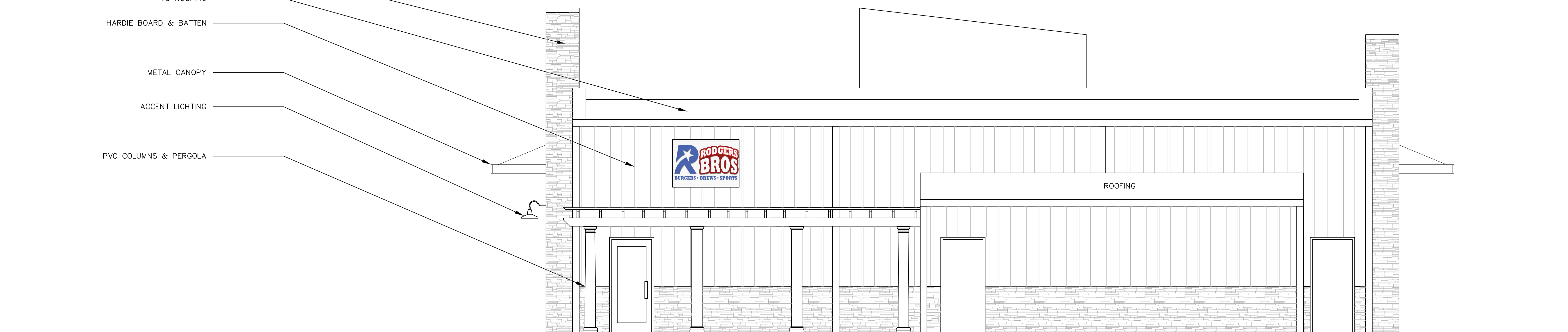
A-1.1

- TYPICAL NOTES:
- STONE VENEER
 - METAL CANOPY
 - DRIVE-THRU WINDOW
 - HARDIE BOARD & BATTEN
 - PVC PERGOLA



1 SOUTHEAST ELEVATION
A1.2 SCALE: 1/4" = 1'-0"

- TYPICAL NOTES:
- STONE VENEER
 - PVC ROOFING
 - HARDIE BOARD & BATTEN
 - METAL CANOPY
 - ACCENT LIGHTING
 - PVC COLUMNS & PERGOLA



2 SOUTHWEST ELEVATION
A1.2 SCALE: 1/4" = 1'-0"

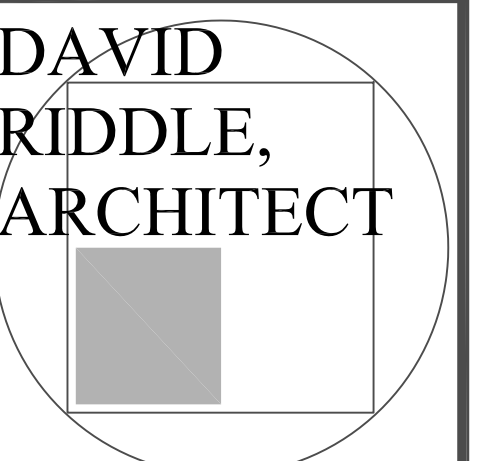
REVISIONS

#	DATE

A NEW RESTAURANT & BAR FOR:



CULLOWHEE, NC



1481 HODGES MILL ROAD
WATKINSVILLE, GA
30677
(404) 285-8646

TITLE: ELEVATIONS

JOB #: 2121

DATE: 02.28.22

SHEET #

A-1.2