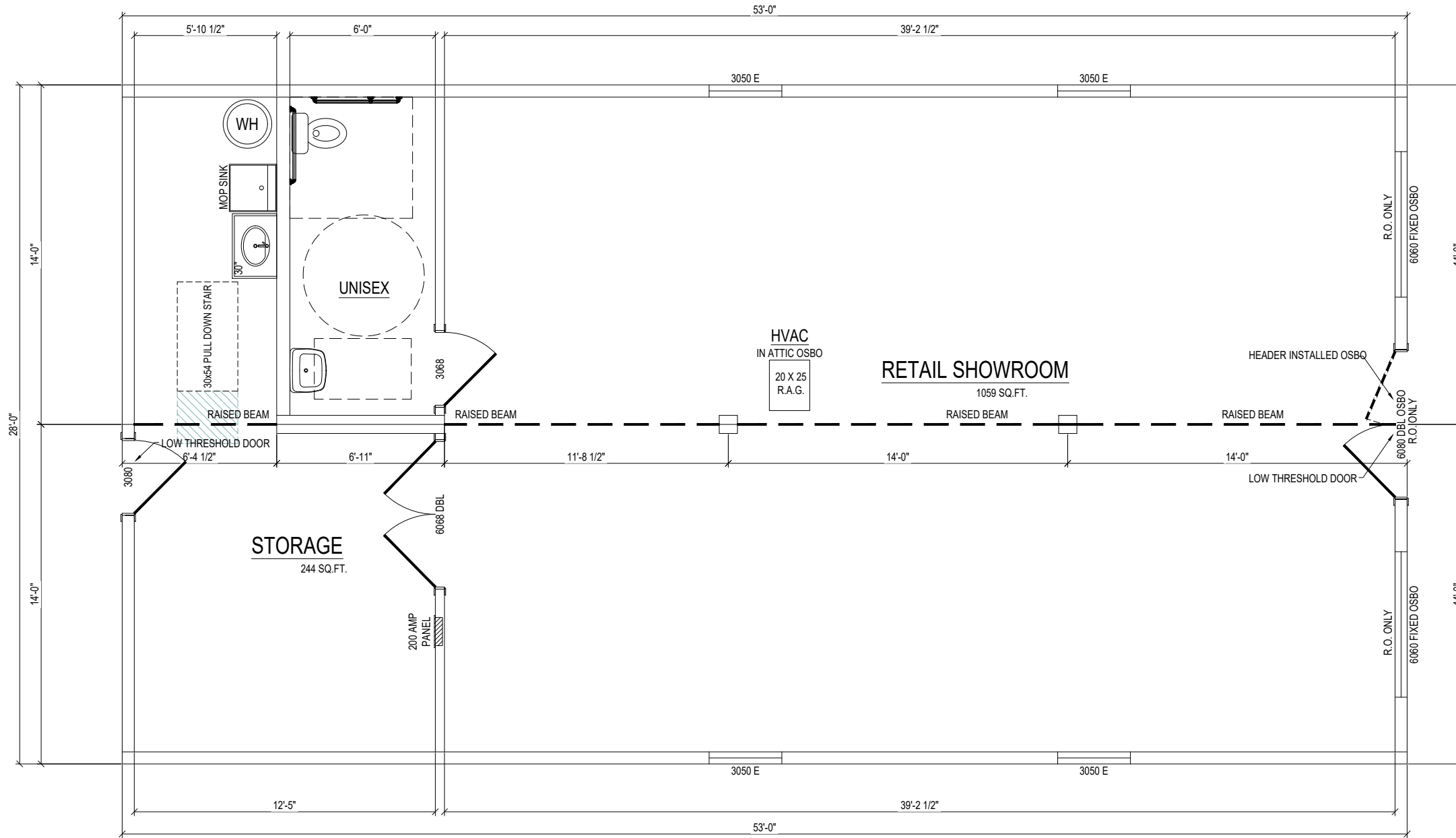


**ENGINEERING AND PLAN DEVELOPMENT:**

DAVID R. TOMPOS, PE  
 PO BOX 490  
 NAPPANEE, INDIANA 46550  
 COA #33677

JOB NUMBER:  
 MFT8164 /  
 ABS - 2468



REVISIONS:

3/22/22	RWS	Revised plans due to code requirements
4/25/22	RWS	Blackline rev-1
5/12/22	RWS	Blackline revision-2
9/8/22	RWC	Blackline revision-3
10/11/22	SDP	Submittals

TITLE:  
**FLOOR PLAN**

DATE: 3/17/22 | DRAWN: RWC

**1ST FLOOR PLAN**  
 1484 TOTAL SQ.FT.  
 1484 SQ.FT. (CONDITIONED)

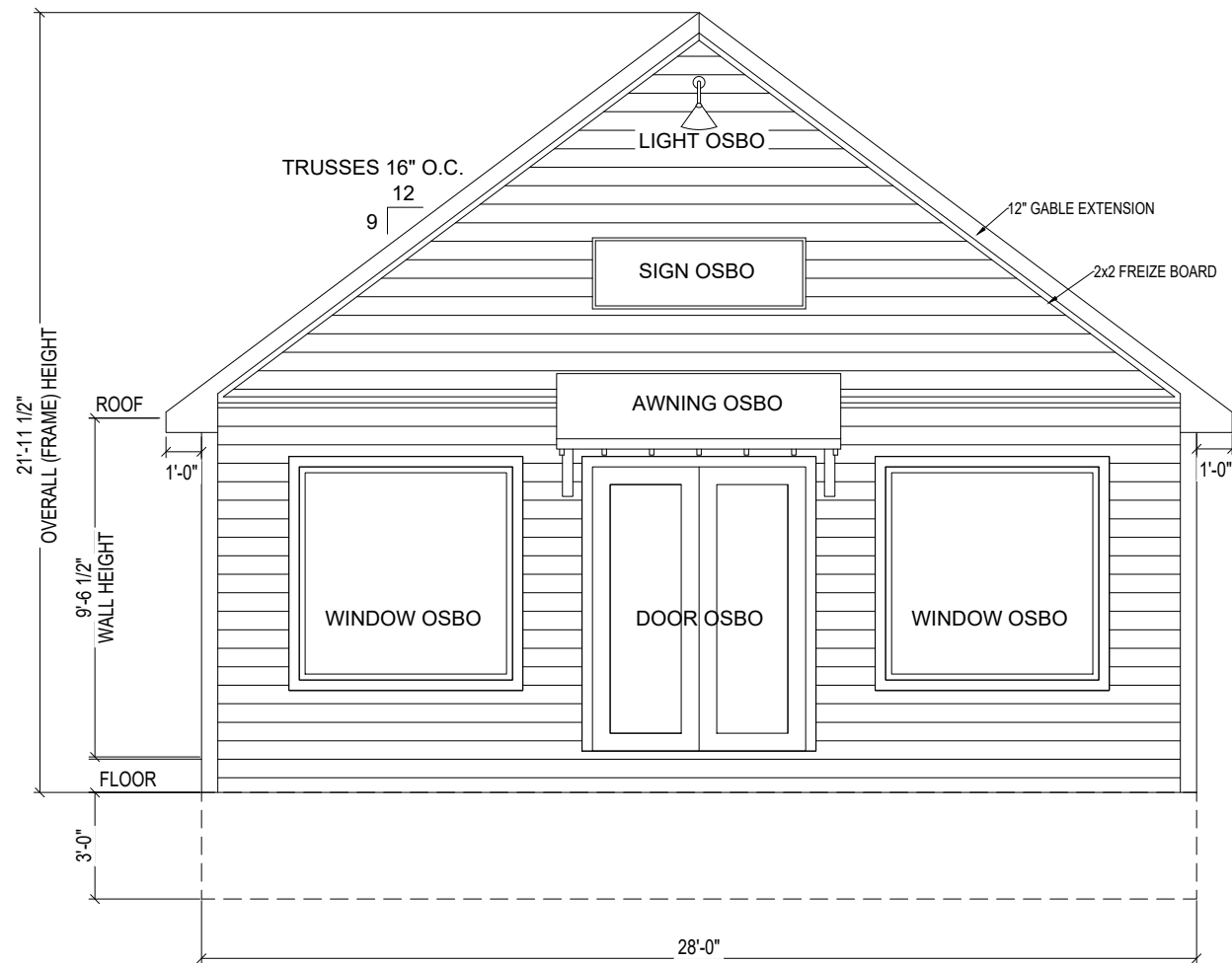
SHEET  
 4

Copyright © 2018  
 THE DESIGNS, PLANS, AND TRUSS COMPONENTS SHOWN HERE WERE DRAWN AND CREATED BY AFFINITY BUILDING SYSTEMS, LLC AND ARE THE SOLE PROPERTY OF AFFINITY BUILDING SYSTEMS, LLC. ALL RIGHTS RESERVED. NO PART OF THIS DESIGN MAY BE REPRODUCED OR TRANSMITTED IN ANY FORM OR BY ANY MEANS, ELECTRONIC OR MECHANICAL, INCLUDING PHOTOCOPYING, RECORDING, OR ANY INFORMATION STORAGE RETRIEVAL SYSTEM, WITHOUT PERMISSION FROM AFFINITY BUILDING SYSTEMS, LLC.

**ENGINEERING AND PLAN DEVELOPMENT:**

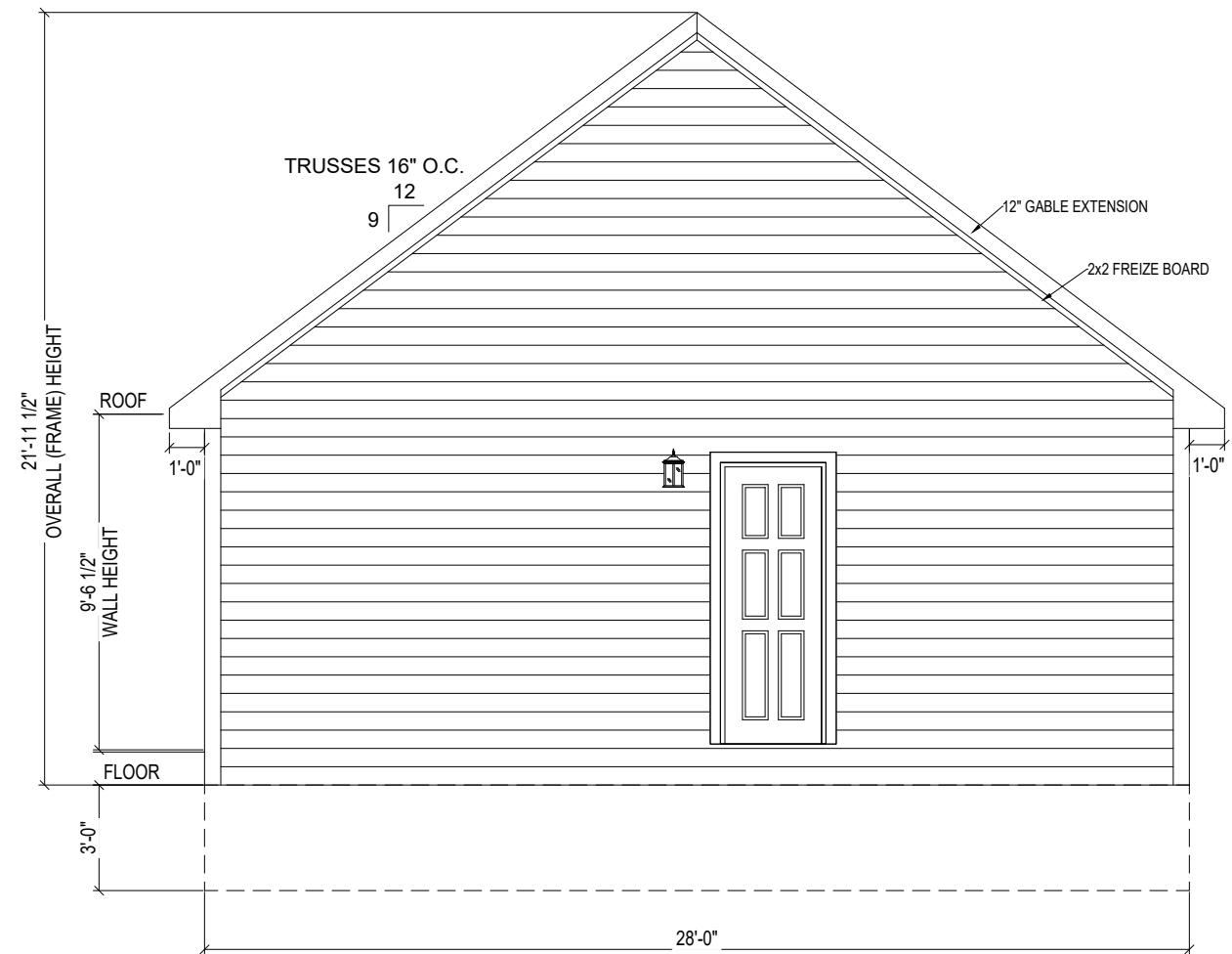
DAVID R. TOMPOS, PE  
 PO BOX 490  
 NAPPANEE, INDIANA 46550  
 COA #33677

JOB NUMBER:  
 MFT8164 /  
 ABS - 2468



# FRONT ELEVATION

ACCESS TO GRADE BY SITE CONTRACTOR  
 SITE CONTRACTOR IS RESPONSIBLE FOR DESIGN AND  
 INSTALLATION OF FOUNDATION



# REAR ELEVATION

ACCESS TO GRADE BY SITE CONTRACTOR  
 SITE CONTRACTOR IS RESPONSIBLE FOR DESIGN AND  
 INSTALLATION OF FOUNDATION

REVISIONS:

3/22/22	RWS	Revised plans due to code requirements
4/25/22	RWS	Blackline rev-1
5/12/22	RWS	Blackline revision-2
9/8/22	RWC	Blackline revision-3
10/11/22	SDP	Submittals

TITLE:  
 ELEVATION

DATE: 3/17/22 | DRAWN: RWC

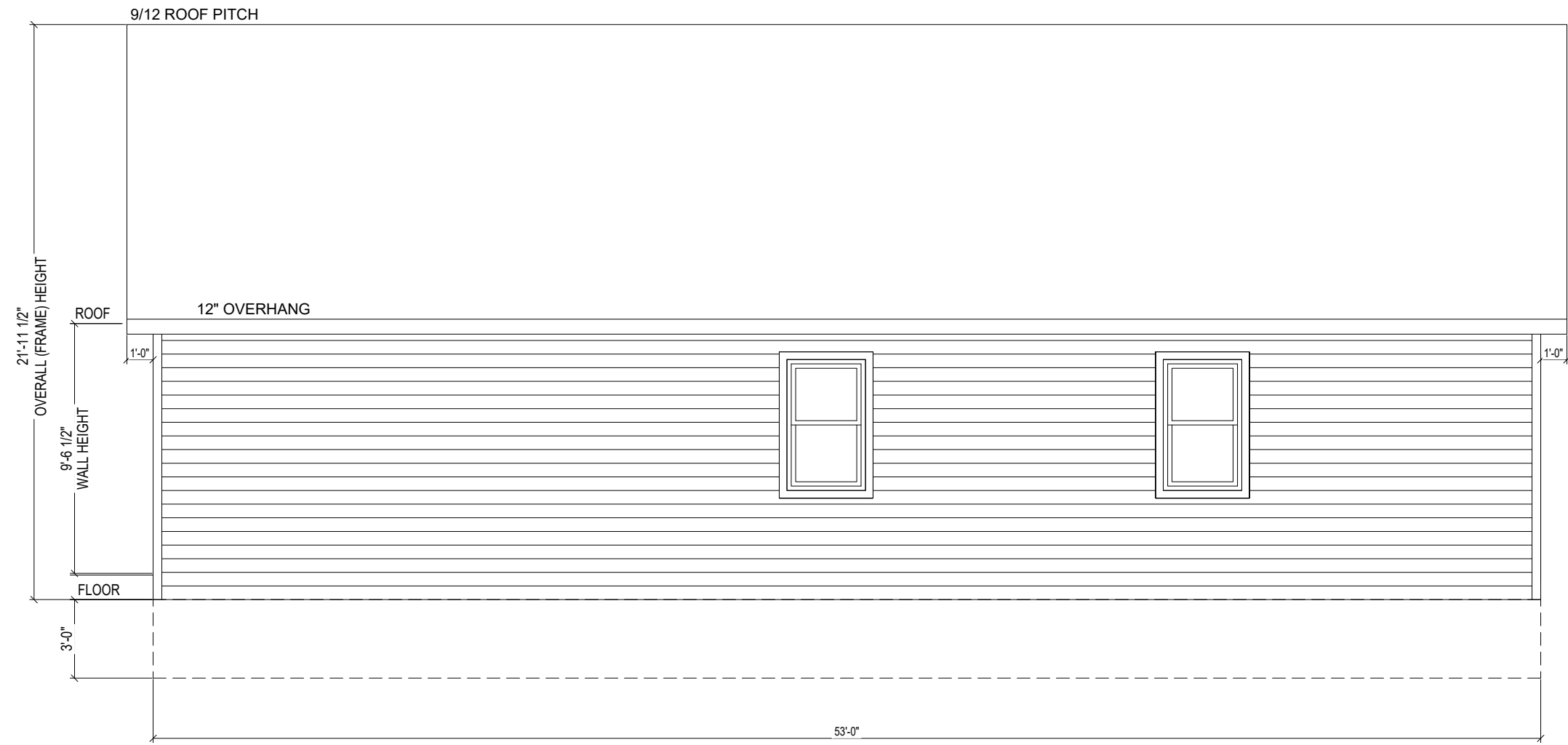
SHEET  
 9

Copyright © 2018  
 THE DESIGNS, PLANS, AND TRUSS COMPONENTS SHOWN HERE WERE DRAWN AND CREATED BY AFFINITY BUILDING SYSTEMS, LLC AND ARE THE SOLE PROPERTY OF AFFINITY BUILDING SYSTEMS, LLC. ALL RIGHTS RESERVED. NO PART OF THIS DESIGN MAY BE REPRODUCED OR TRANSMITTED IN ANY FORM OR BY ANY MEANS, ELECTRONIC OR MECHANICAL, INCLUDING PHOTOCOPYING, RECORDING, OR ANY INFORMATION STORAGE RETRIEVAL SYSTEM, WITHOUT PERMISSION FROM AFFINITY BUILDING SYSTEMS, LLC.

**ENGINEERING AND PLAN DEVELOPMENT:**

DAVID R. TOMPOS, PE  
 PO BOX 490  
 NAPPANEE, INDIANA 46550  
 COA #33677

JOB NUMBER:  
 MFT8164 /  
 ABS - 2468



# LEFT ELEVATION

ACCESS TO GRADE BY SITE CONTRACTOR  
 SITE CONTRACTOR IS RESPONSIBLE FOR DESIGN AND  
 INSTALLATION OF FOUNDATION

**REVISIONS:**

- 3/22/22 RWS Revised plans due to code requirements
- 4/25/22 RWS Blackline rev-1
- 5/12/22 RWS Blackline revision-2
- 9/8/22 RWC Blackline revision-3
- 10/11/22 SDP Submittals

**TITLE:**

ELEVATION

**DATE:**

3/17/22

**DRAWN:**

RWC

SHEET

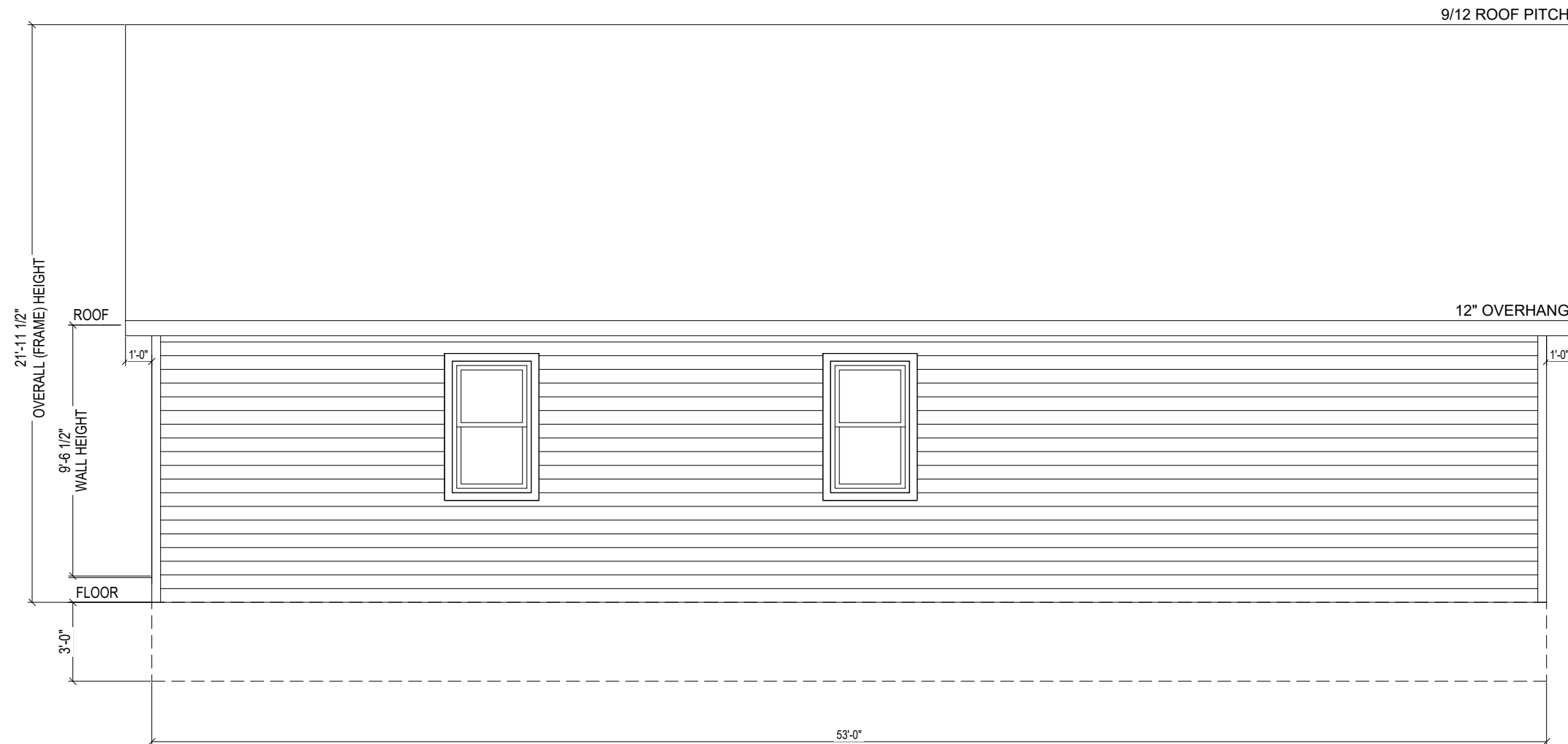
10

Copyright © 2018  
 THE DESIGNS, PLANS, AND TRUSS COMPONENTS SHOWN HERE WERE DRAWN AND CREATED BY AFFINITY BUILDING SYSTEMS, LLC AND ARE THE SOLE PROPERTY OF AFFINITY BUILDING SYSTEMS, LLC. ALL RIGHTS RESERVED. NO PART OF THIS DESIGN MAY BE REPRODUCED OR TRANSMITTED IN ANY FORM OR BY ANY MEANS, ELECTRONIC OR MECHANICAL, INCLUDING PHOTOCOPYING, RECORDING, OR ANY INFORMATION STORAGE RETRIEVAL SYSTEM, WITHOUT PERMISSION FROM AFFINITY BUILDING SYSTEMS, LLC.

**ENGINEERING AND PLAN  
DEVELOPMENT:**

DAVID R. TOMPOS, PE  
PO BOX 490  
NAPPANEE, INDIANA 46550  
COA #33677

JOB NUMBER:  
MFT8164 /  
ABS - 2468



# RIGHT ELEVATION

ACCESS TO GRADE BY SITE CONTRACTOR  
SITE CONTRACTOR IS RESPONSIBLE FOR DESIGN AND  
INSTALLATION OF FOUNDATION

**REVISIONS:**

- 3/22/22 RWS Revised plans due to code requirements
- 4/25/22 RWS Blackline rev-1
- 5/12/22 RWS Blackline revision-2
- 9/8/22 RWC Blackline revision-3
- 10/11/22 SDP Submittals

**TITLE:**

ELEVATION

**DATE:**

3/17/22

**DRAWN:**

RWC

SHEET

11

Copyright © 2018  
THE DESIGNS, PLANS, AND TRUSS COMPONENTS SHOWN HERE WERE DRAWN AND CREATED BY AFFINITY BUILDING SYSTEMS, LLC AND ARE THE SOLE PROPERTY OF AFFINITY BUILDING SYSTEMS, LLC. ALL RIGHTS RESERVED. NO PART OF THIS DESIGN MAY BE REPRODUCED OR TRANSMITTED IN ANY FORM OR BY ANY MEANS, ELECTRONIC OR MECHANICAL, INCLUDING PHOTOCOPYING, RECORDING, OR ANY INFORMATION STORAGE RETRIEVAL SYSTEM, WITHOUT PERMISSION FROM AFFINITY BUILDING SYSTEMS, LLC.