

WELCOME!

Jackson County is seeking public input on the ‘Headwaters District’ Conservation Plan.

This plan will assess the conservation priorities of the community and generate supporting recommendations and best management practices to ensure that the rural, scenic, and natural character of this area is protected in the face of increasing development pressure.

District 4, the ‘Headwaters District’, is roughly 180,000 acres in area and composed of six townships: Caney Fork, River, Canada, Mountain, Hamburg, Cashiers. It contains a wealth of natural and cultural resources – farms, forests, scenery, water, wildlife - which are strong drivers of tourism, recreation, and economic development, and which is a cornerstone to the collective experience of folks who live and visit here. Identifying and protecting those priority resources is important to a sustainable future for the District.

YOUR INPUT WILL HELP US IDENTIFY THE RECREATION, EDUCATION, AND CONSERVATION NEEDS FOR THE PLAN.

WE WANT TO HEAR FROM YOU!

THERE ARE 4 STATIONS TO VISIT:

- 1 PROJECT ORIENTATION
- 2 MAPS OF THE DISTRICT
- 3 CONSERVATION THEMES
- 4 SURVEY & NEXT STEPS

**YOUR INPUT IS VERY IMPORTANT.
PLEASE VISIT ALL OF THE STATIONS
AND ASK QUESTIONS!**

HOW YOU CAN PARTICIPATE:

Overall expect to spend 20-30 minutes exploring the boards and completing the survey at the end.

Read the project orientation board at Station 1 to understand the project vision and goals.



Next, at Stations 2 & 3, take a look at maps of the district and learn about emerging conservation themes.



Finally, at Station 4, please take some time to complete the survey and read about the next steps.

PUBLIC MEETING

Jackson County 'Headwaters District'
Conservation Plan

PROJECT VISION

The Conservation Plan is a blueprint to make responsible land use decisions that balance development and land conservation and sustain our unique ecology, rural character, and way of life.

PROJECT GOALS



Conserve and sustain natural and agricultural resources



Advance responsible development



Protect watersheds



Empower community education and land stewardship

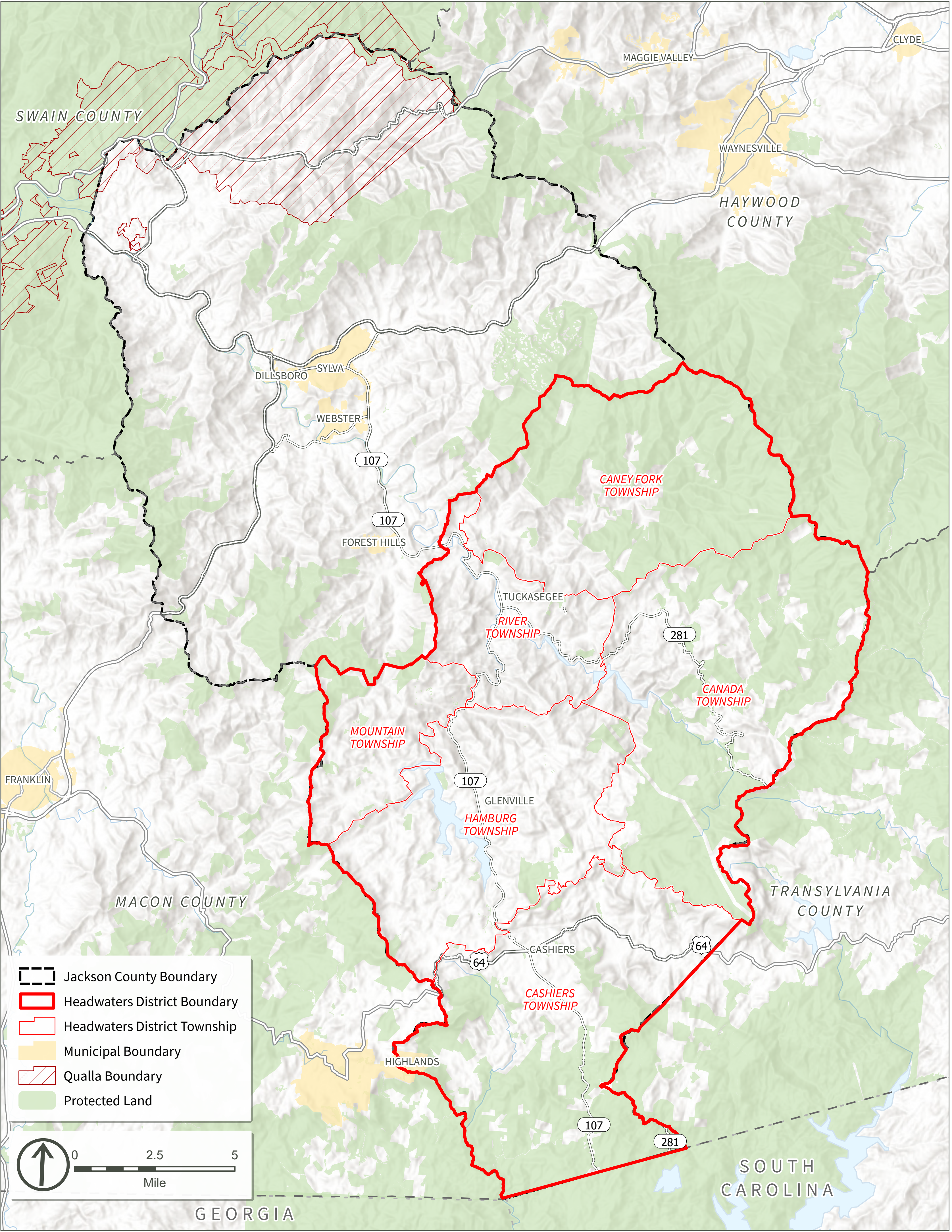


Jackson County
— North Carolina —

JACKSON COUNTY

ABOUT THIS MAP:

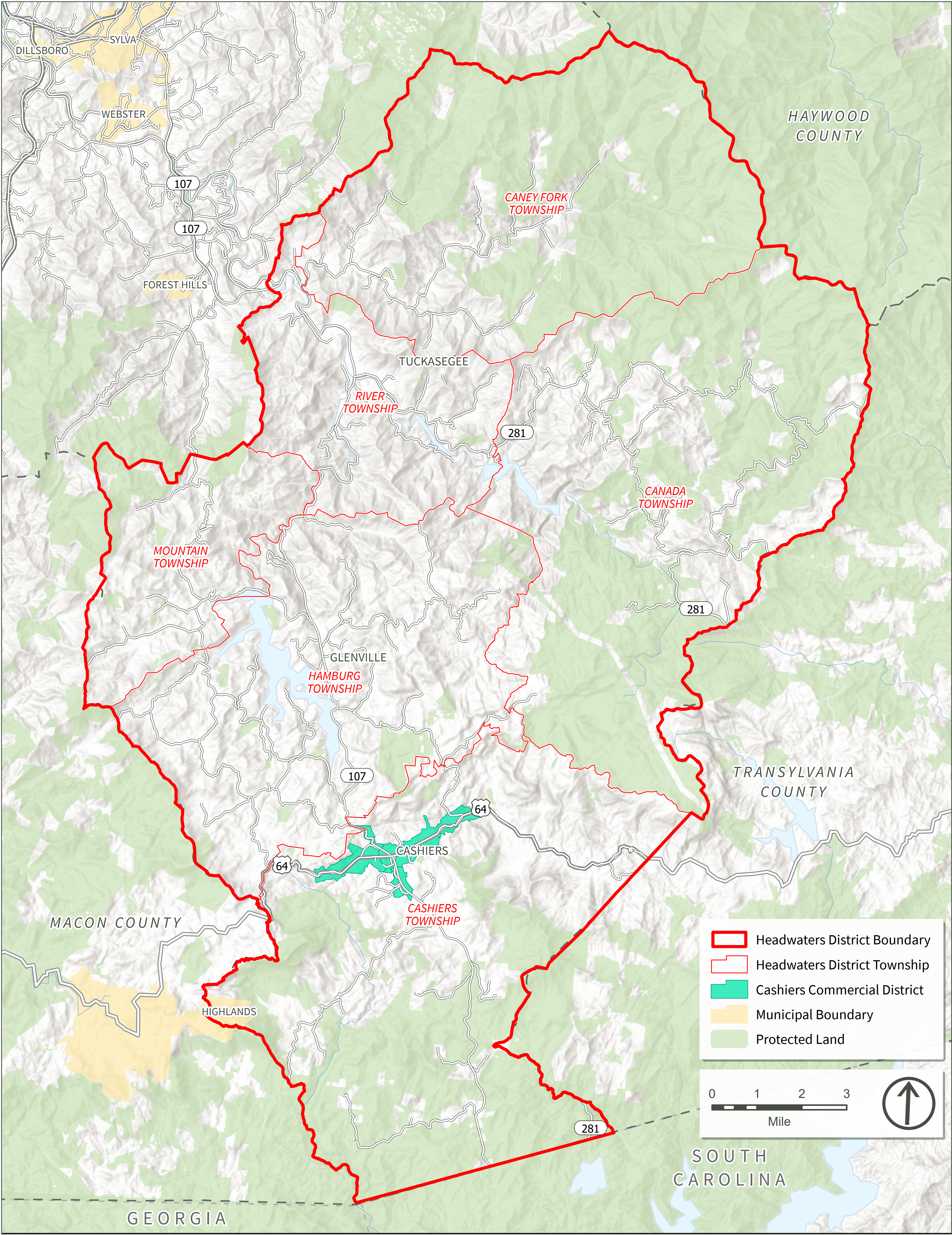
This map shows the geographic extent of the Headwaters District (thick red outline) and its constituent Townships (thin red outline) within the greater Jackson County boundary (dashed black outline).



DISTRICT 4 TOWNSHIPS

ABOUT THIS MAP:

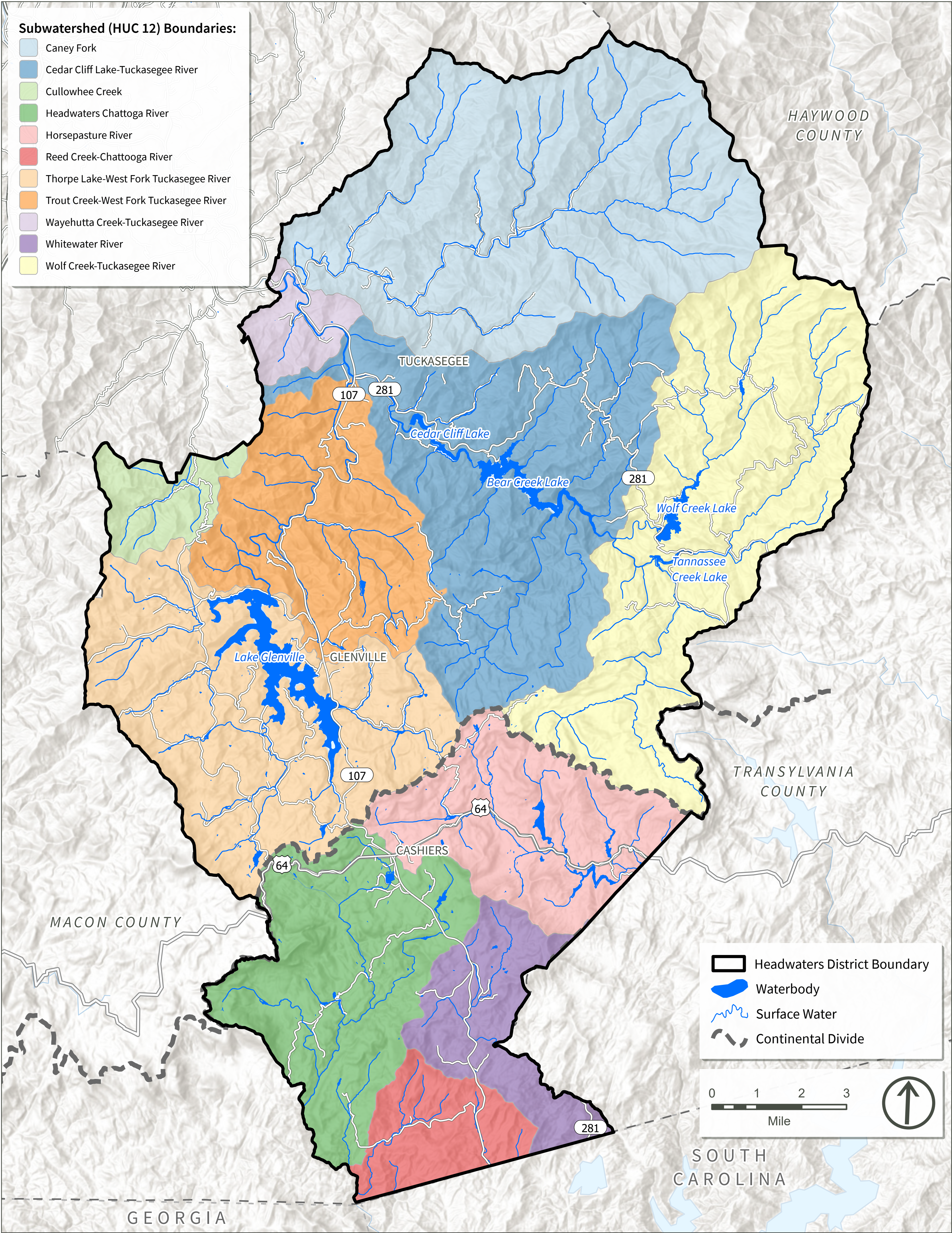
This map shows the Headwaters District (thick red outline) and its constituent Townships (thin red outline).



WATERSHEDS

ABOUT THIS MAP:

This map depicts the subwatersheds contained within the Headwaters District. Note the Eastern Continental Divide in the District's southern end, south from which flows the headwaters of the Chattooga, Whitewater, and Horsepasture Rivers, and north from which flow the headwaters of the Tuckasegee River.

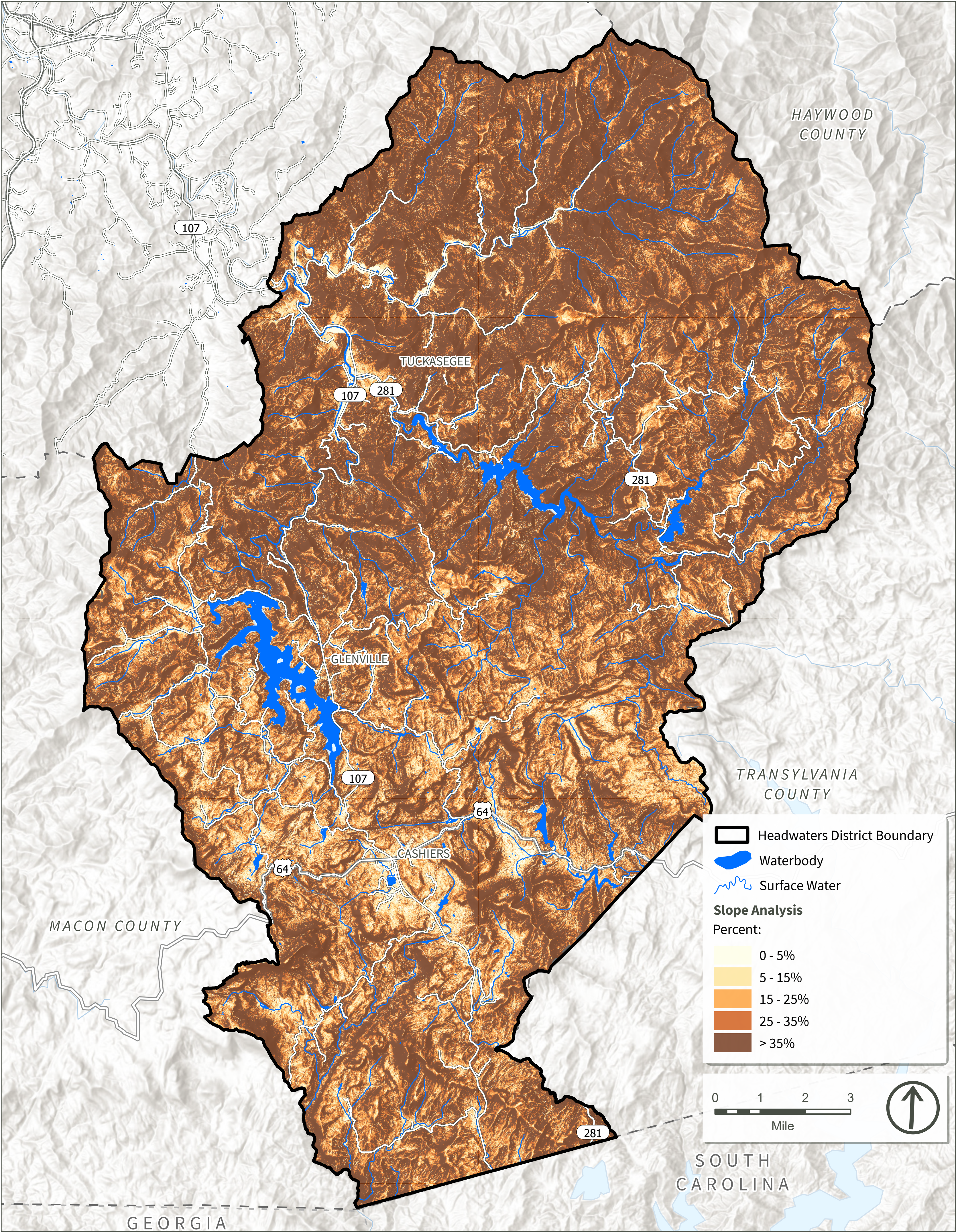
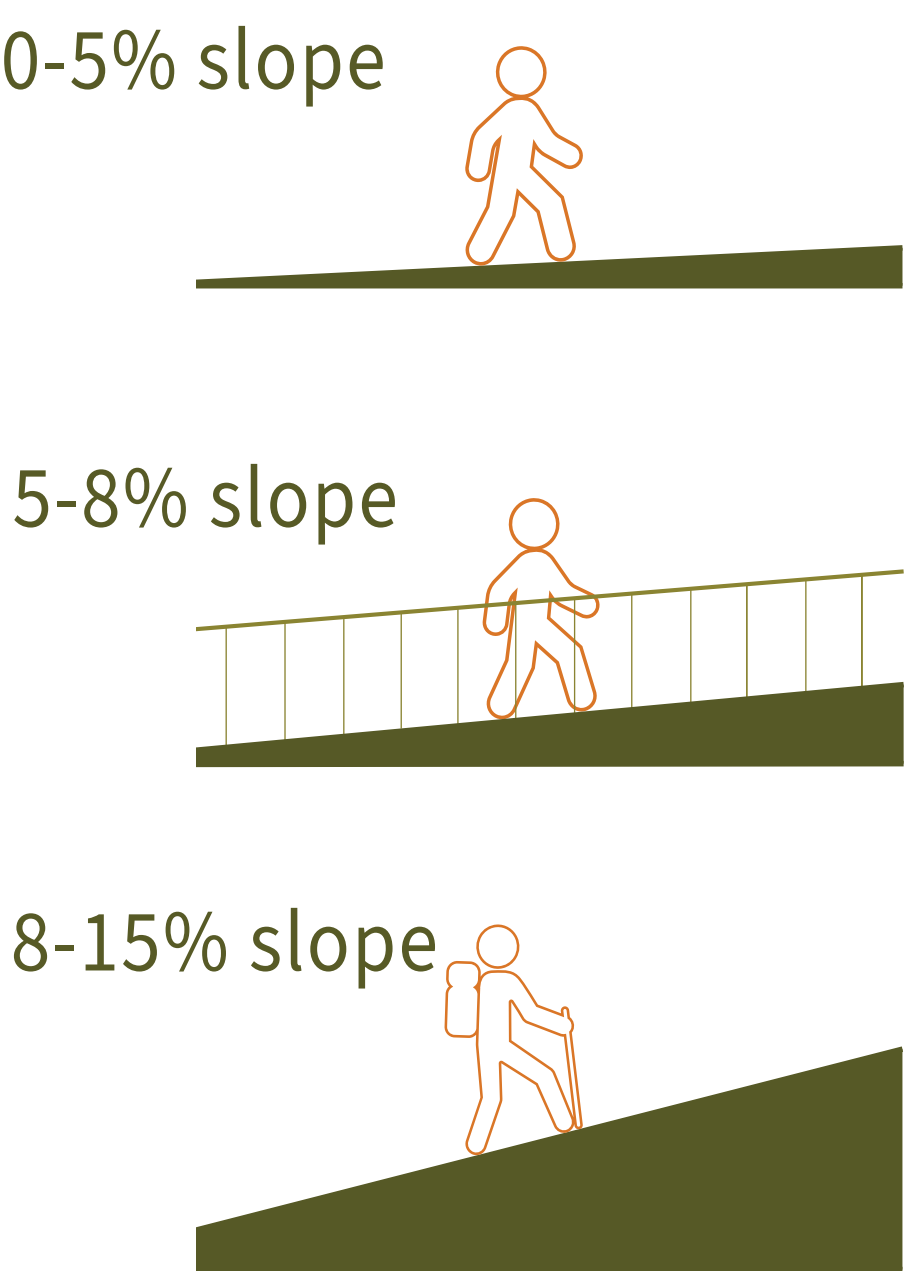


SLOPES

ABOUT THIS MAP:

This map depicts percent slope across the Headwaters District, with darker areas having steeper slopes than lighter areas. Note the difference in slope between the northern and southern extent of the District.

The slope is shown as a percentage. For reference, a slope between 0-5% is comfortable to walk. A 5-8% walkway would require a handrail, while areas with a 8-15% slope would feel more like a challenging hike. Slopes of 15-35% are more challenging for construction of roads and buildings. Typically, slopes steeper than 35% should be avoided for development due to costs and hazards associated with steep slopes.



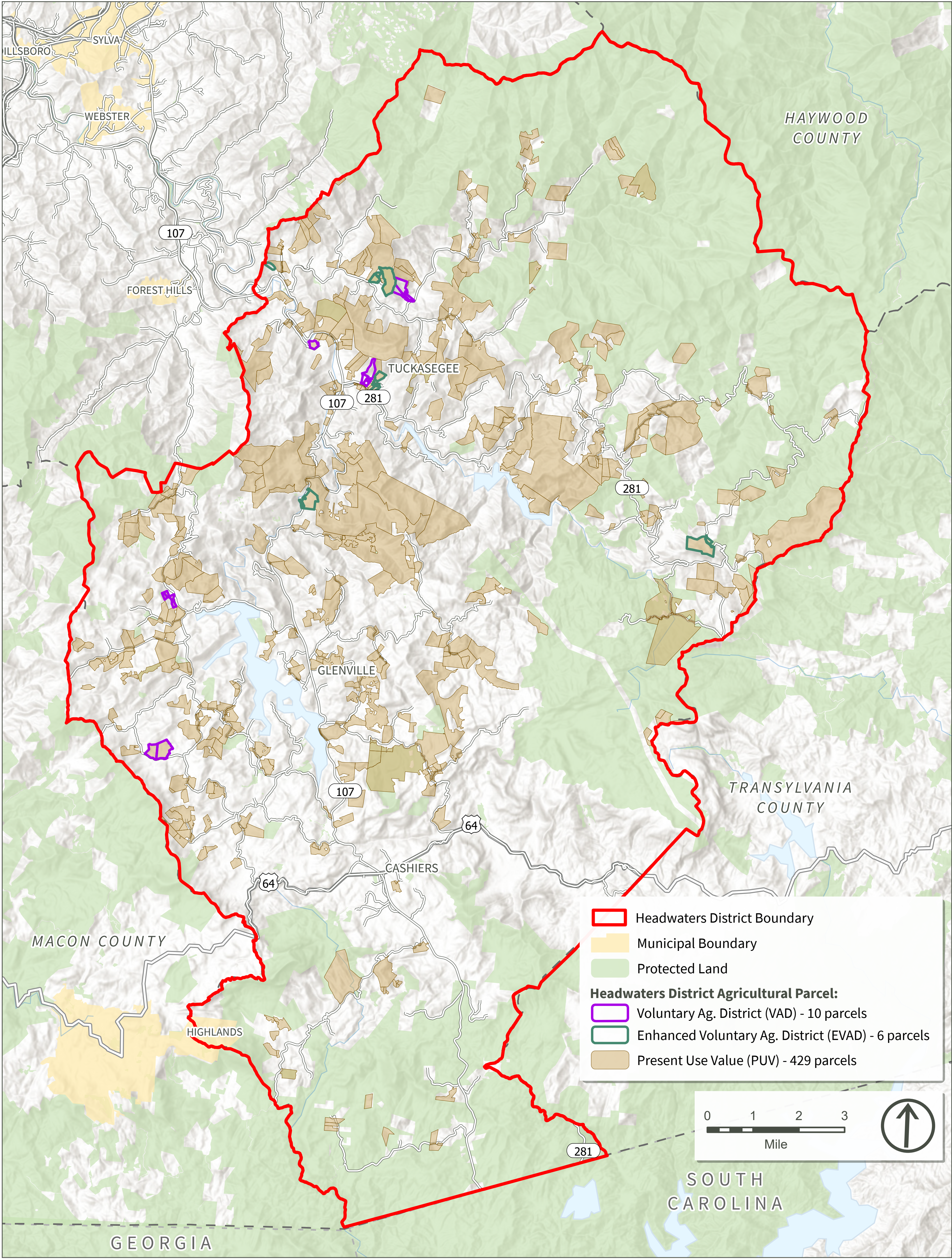
FARMLAND

ABOUT THIS MAP:

This map shows the distribution of properties within the Headwaters District that either participate in the State’s Present Use Value (PUV) tax deferment program or the County’s Voluntary and Enhanced Voluntary Agricultural District (VAD/EVAD) program, or both.

North Carolina’s PUV program, which is managed at the county level, offers property tax deferment for land used for agriculture, horticulture, or forestry, and it also includes a component specifically for wildlife conservation.

Countywide VAD/EVAD programs promote agricultural values by increasing the identity of, and pride in, the agricultural community and its way of life. The programs also encourage the economic and financial health of agriculture, horticulture, and forestry through protection from non-farm development and other negative impacts on properly managed farms.



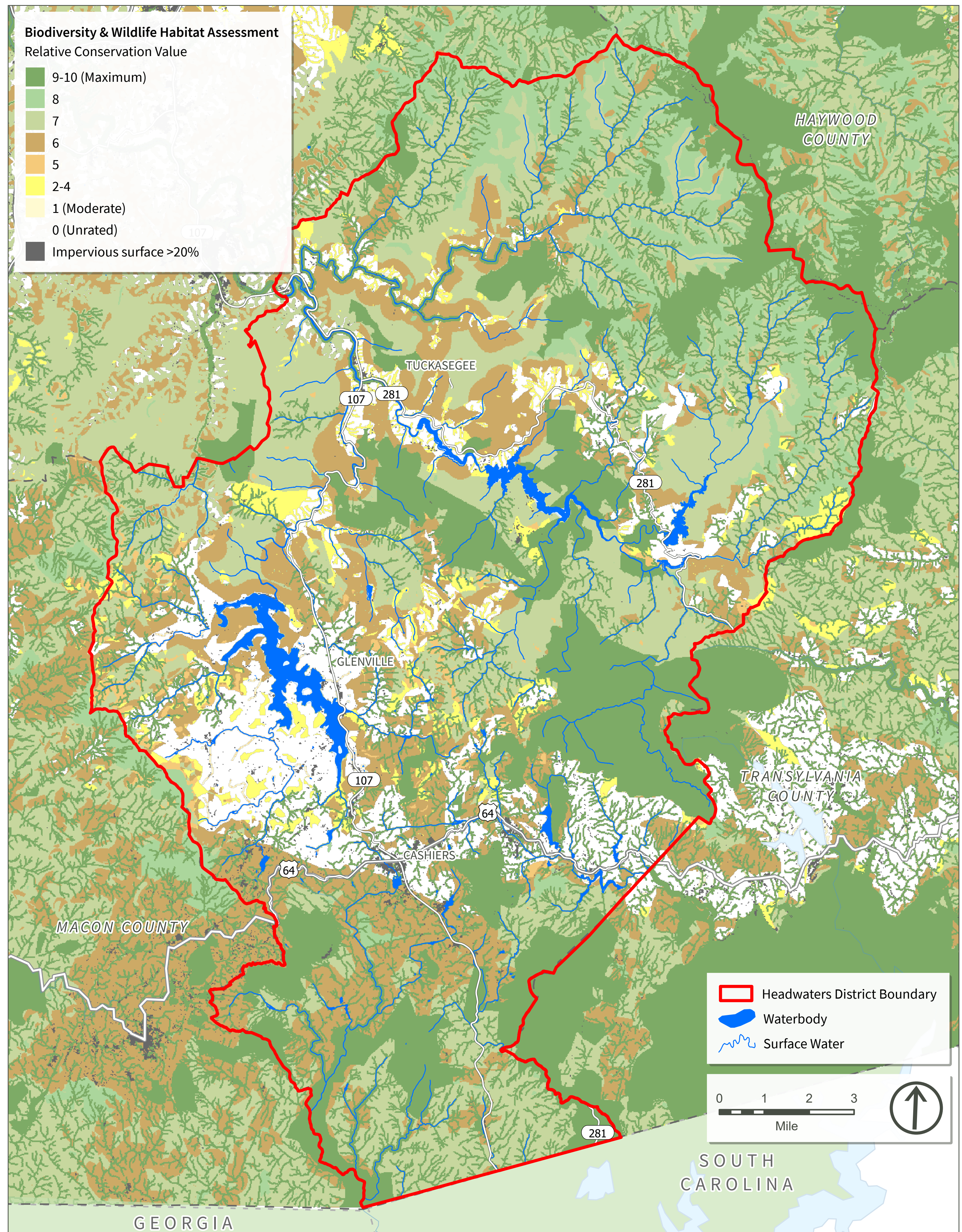
PUBLIC MEETING

BIODIVERSITY & WILDLIFE HABITAT ASSESSMENT

ABOUT THIS MAP:

This map depicts the Relative Conservation Value (RCV) of the landscape within and surrounding the Headwaters District. RCV is determined by the NC Natural Heritage Program as part of their Biodiversity & Wildlife Habitat Assessment (BWHA), which includes a wide variety of natural resource related data (streams, wetlands, rare species, critical habitats, managed areas, etc.) that are weighted and compared to produce this map.

The more green an area is, the higher its RCV; the lighter the color, the lower the RCV. Areas lacking color have been developed to the point that habitat integrity is no longer present, and although these areas may contain natural resource elements of conservation value, they are discontinuous, dissected, and therefore cannot be considered in the assessment.

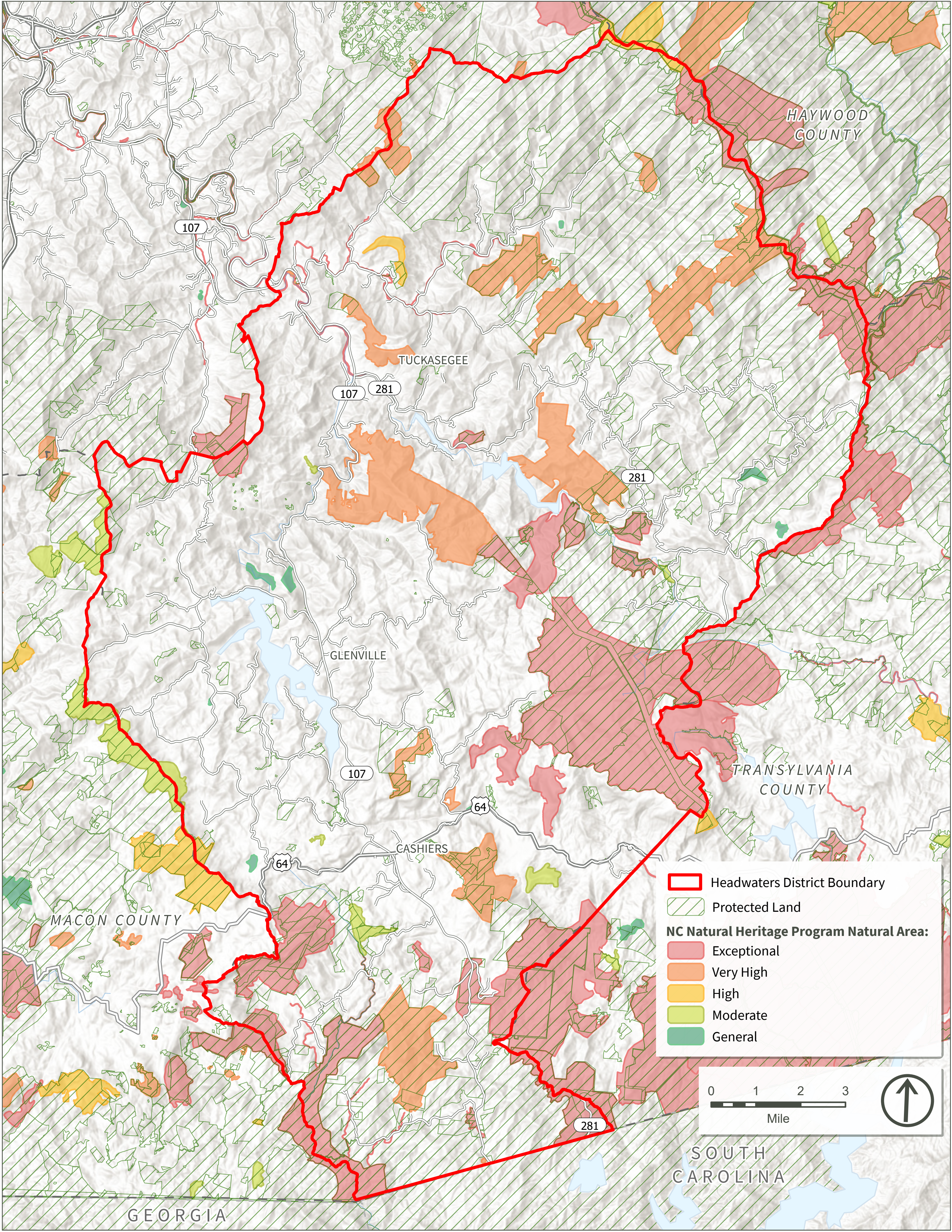


SENSITIVE AND PROTECTED AREAS

ABOUT THIS MAP:

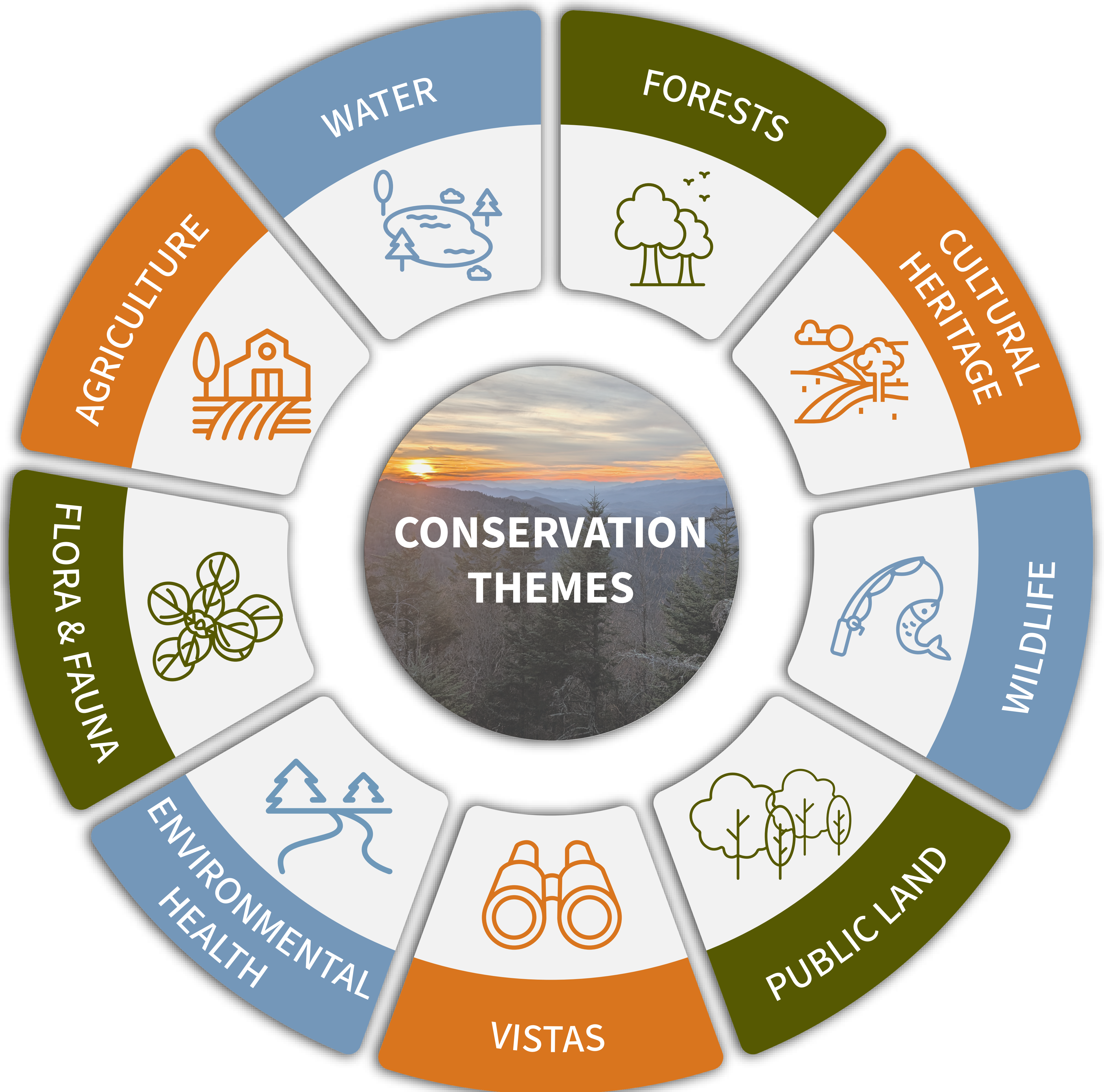
This map shows the distribution of known Natural Areas (NA) across the Headwaters District and their varying degree of significance. NA are identified and classified by the NC Natural Heritage Program based on the habitat and biodiversity elements they contain, but no formal protections are afforded via the classification, therefore their designation is subject to change based on changing land use patterns.

This map also includes an overlay of Managed Lands, areas such as National Forest, state Gamelands, and Protected Land, all of which have permanent legal protections; it highlights where important Natural Areas exist without permanent protections.



PUBLIC MEETING

CONSERVATION THEMES



This graphic shows elements that are important to the environment and character of the district. These conservation themes emerged during prior Steering Committee and Key Stakeholder meetings. At Station 4, you'll have a chance to weigh in on the themes that are important to you.

PUBLIC MEETING

*Jackson County 'Headwaters District'
Conservation Plan*

SURVEY AND NEXT STEPS

TAKE THE SURVEY

- Your feedback will help shape the final plan

Please spend 5-10 minutes to
• respond to the Public Survey

- Scan the QR code to access
- the project landing page and take the survey



SCAN HERE

NEXT STEPS

- The Public Survey will be open until June 13th
- The project team will share results and recommendations in late summer
- Follow our progress on the project landing page



Jackson County
– North Carolina –