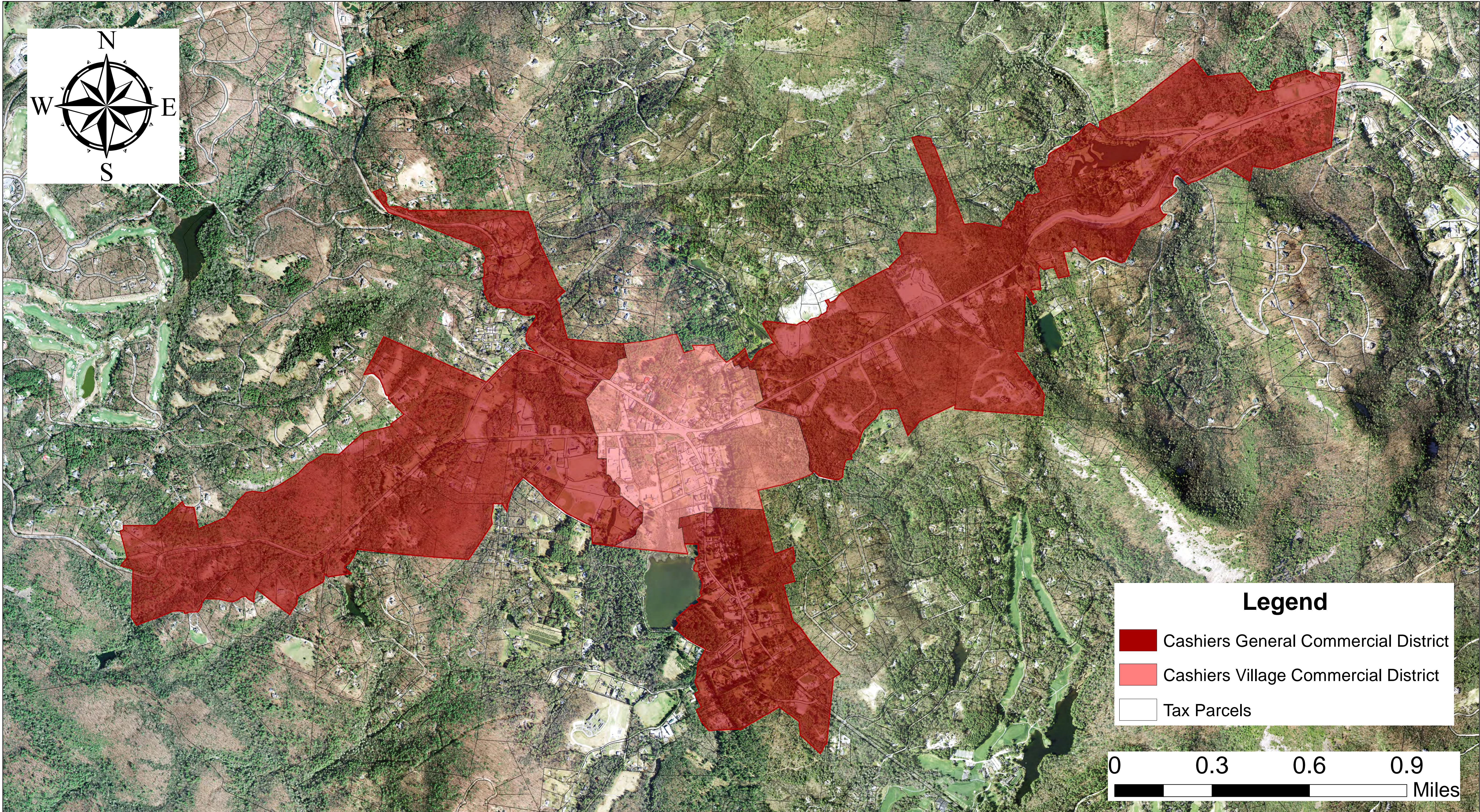





Cashiers Area Zoning Map



Legend

-  Cashiers General Commercial District
-  Cashiers Village Commercial District
-  Tax Parcels

0 0.3 0.6 0.9 Miles

Jackson County makes no warranties or guarantees, either expressed or implied as to the completeness, accuracy, or correctness of the data potrayed in this product, nor accepts any liability, arising from any incorrect, incomplete or misleading information contained therein. All information, data, and databases are provided "as is" with no warranty, expressed or implied, including but not limited to, fitness for a particular purpose.